

Monumental Sculpture Proposal

Summary

During 2020 our society has endured an extraordinary amount of change and conflict. One of the most prevalent issues that Americans have had to struggle with this year is the idea of racial injustice in our society's systems as well as in the minds of everyday people, who were previously unaware of their own contribution to racism. While this has been extremely difficult for many, we have also seen what may be the beginning of a new era of awareness with a movement towards equality and freedom from bias. While the road to true equality will continue to be a long one, we must also celebrate the progress we have made in this last year.

Table of Contents

Summary	1
Objectives: Issues & Solutions	2
Issues.....	2
Solutions	2
Impact on Community	2
Details	2
Concept Drawing.....	2
Design.....	3
Meaning	3
Maquette	3
Materials	3
Resources	4
Location.....	4
Schematics	4
Logistics.....	5
Stakeholders	5
Budget.....	5
Cost breakdown:	5

Objectives: Issues & Solutions

Issues

- An increasingly divided society.
- Racial injustice and unrest.
- Voices being silenced that need to be heard. Solution can't be found or implemented without looking at entire picture.

Solutions

Large-scale, public outdoor sculpture that:

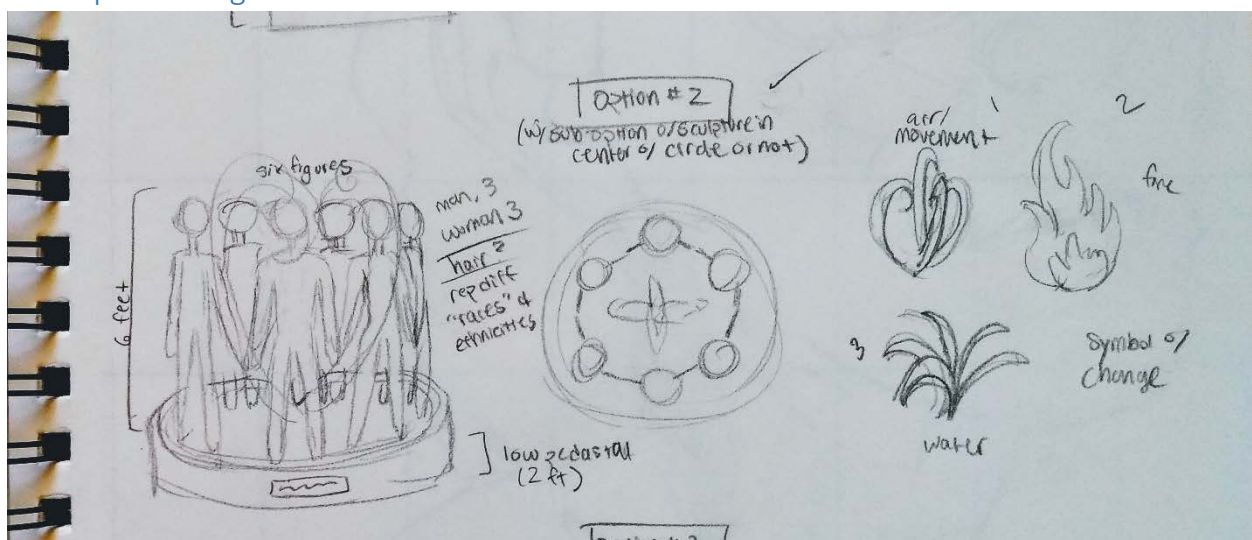
- Reminds of strength in unity and support.
- Reminds that positive change will happen if we acknowledge each other's stories and struggles, and have compassion for each other.
- Is made of materials that are durable and stable outdoors.

Impact on Community

- Will raise awareness of all people groups' dependence on one other.
- Will send message that we help each other when racist attitudes are fought.
- Celebrate the steps towards self-awareness and positive growth that have been made this year towards fighting racial injustice and becoming anti-racist.

Details

Concept Drawing



Design

The sculpture will be placed on a low, circular pedestal, about 2 feet tall. The height will make it best viewed from the ground. Six figures stand on top of the base in a circle, facing outward, their hands clasped. Each is about six feet tall, with some variation to align with individual people's differences in heights. In the center, between the figures is an abstract symbol that evokes a visual sense of movement. The circular shape will allow it to be viewed from any angle.

The visible portion of the sculpture will be made from concrete. The concrete will retain its natural rough finish. Concrete is extremely durable outdoors, has a subtle color that will suit both natural and urban surroundings, and is relatively easy to manipulate for both large shapes and detail work. Underneath the outer, concrete layers, wire netting and Styrofoam will create the underlying shape and provide support. This will also decrease the sculpture's weight, which will help in transporting it to that location.

On the base will be a plaque commemorating 2020 and the steps forward we've begun to take, alongside a reminder to continue striving forward in the future.

Meaning

The six figures represent the six common "races" thought of by American society, as reflected on documents such as the national census. They clasp hands to symbolize togetherness, unity, and support. The abstract symbol in the center represents movement and change rising from this relationship and interaction of the six groups. The base and the arrangement of the figures is circular, symbolizing equality.

Maquette



Materials

- Wire netting

- Styrofoam
- Concrete mix

Resources

- Wire cutters, pliers
- Work gloves, latex gloves
- Buckets
- Sculpting tools

Location



The proposed location is the Trinity Trails River Park Trailhead off of Bryant Irvin Road, about five minutes north of Interstate-20 in Fort Worth, Texas.

Features include:

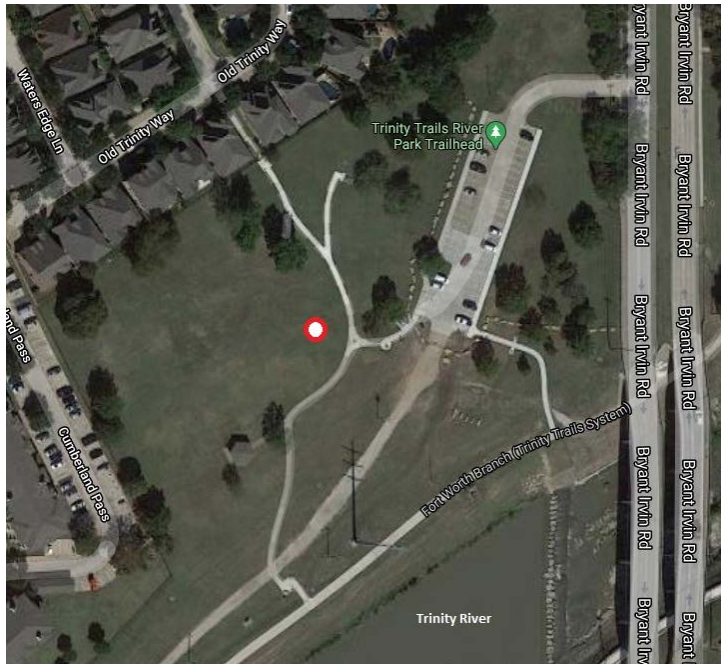
- On the Trinity Trails, next to the Trinity River.
- Connected to Downtown as well as other popular and busy locations, such as the Clearfork Trailhead and Waterside.
- Large areas of open space and grass.
- Trailhead sees a large amount of foot traffic by a very diverse population (age, ethnicity, socio-economic level, etc.).
- Diverse populations live nearby or use trailhead 365 days a year regardless of weather.
- Location can be seen by drivers on Bryant Irvin Road for about 15-30 seconds due to a clear line of sight for some distance before passing the actual trailhead.

Other considerations include:

- Nearby parking lot
- Wide range of stakeholders

Schematics

○ Marks the proposed location of the sculpture.



Logistics

Stakeholders

- **Artist:** Conceptualizes, creates, and manages installment of the sculpture. Creates all necessary documentation.
- **Pedestrians, cyclists, etc.:** The direct consumers, who are able to see the sculpture up-close and on foot at its location.
- **People who live within sight of the sculpture:** The area is close to several apartment complexes. Many buildings in these complexes have units that overlook the sculpture’s location.
- **Drivers on nearby streets:** Will have a brief view of the sculpture. These stakeholders will be able to see something has been placed in the park area, but will not be able to such exactly what it is. That may incite curiosity, leading them to stop and look more closely.
- **Tarrant Regional Water District (TRWD):** Manages the Trinity Trails.
- **Fort Worth Parks and Recreation:** Manages the parks along the Trinity Trails within Fort Worth city limits.

Budget

Total estimated cost: \$10,600

Cost breakdown:

Materials	Estimated Amount	Cost per Unit	Total
Wire netting	142.86 square ft.	\$9.97 / 50 square ft.	\$31.78 *
Styrofoam	70.18 cubic ft.	\$59.99 / 0.66 cubic ft.	\$6,756.37 *
Concrete mix	2,159.4 lb.	\$5.97 / 80 lb.	\$177.61 *

Labor

Estimated hours required 140
Cost (at \$15/hour) \$2,100

Transportation: \$1,500

*Note: Sales tax is 6.25%

Internet #300175257 Model #FN11250



Hover Image to Zoom

1 in. x 1 ft. x 50 ft. Poultry Netting
(Brand Rating: 4.1/5)

♥ 28

★★★★★ (1) Write a Review Questions & Answers

\$9⁹⁷



\$5.97

★★★★☆ 131

QUIKRETE ProFinish 5000 80-lb High Strength Concrete Mix

HOME / PRODUCTS / STYROFOAM BLOCKS 4IN (PACK OF 36)



SKU: 04650110014_36

Styrofoam Blocks 4in (Pack of 36)

★★★★★ 1 Review

\$59.99

Qty

− 1 +

ADD TO CART

Create whimsical sculptures and crafts with the help of these foam styrofoam blocks. The Styrofoam Blocks can be utilized as building or foundation pieces in homemade statues or busts, dioramas, or models. Or, use these bricks to stabilize flowers or branches in a large vase. These styrofoam blocks come in packs of 36, and each measure 4in square and 2in thick.

Collections: Bouquet Supplies, Craft Supplies, Crafts, Floral Supplies, Foam, Foam & Adhesives

